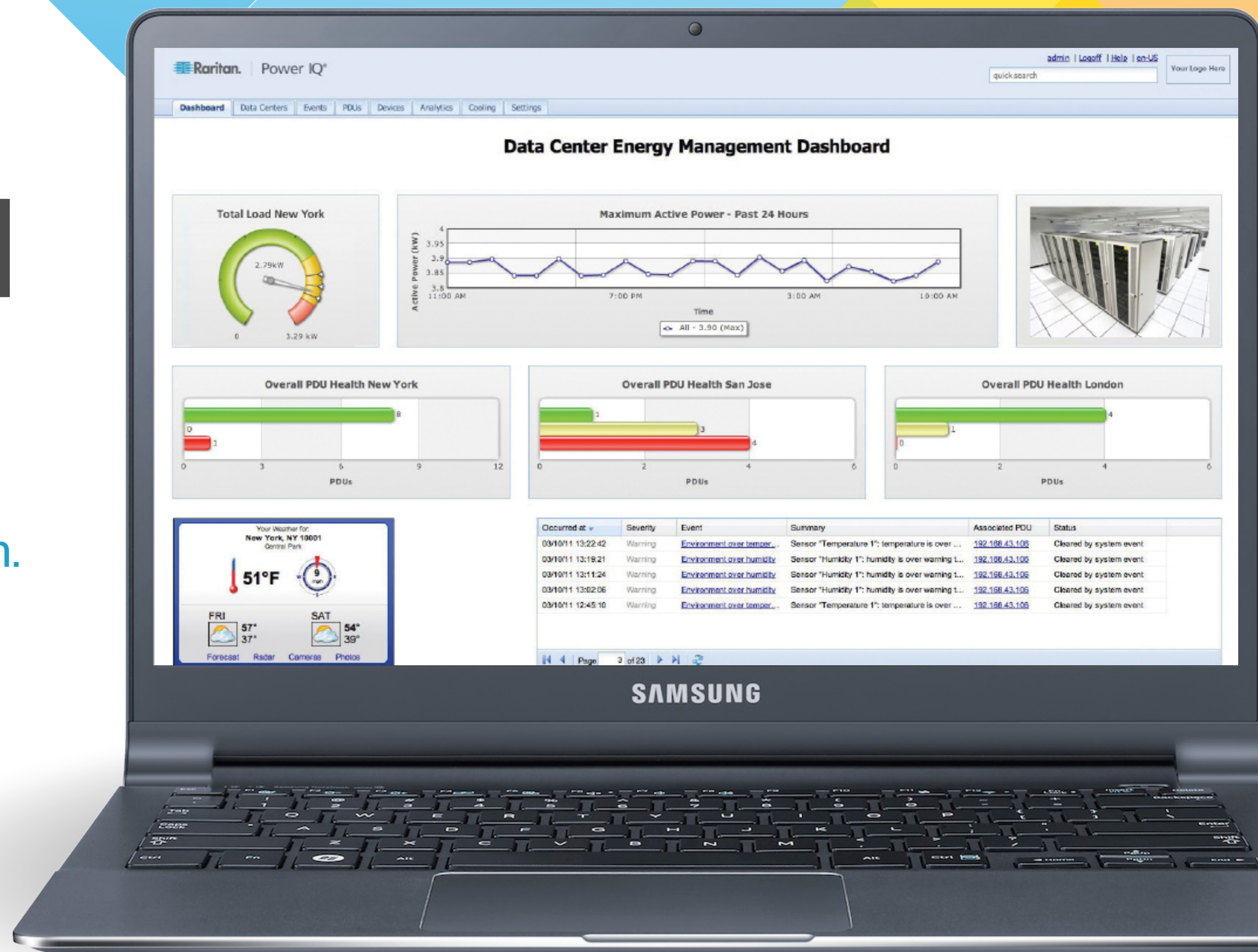


You Need DCIM if

Key Signs That Indicate You Need a DCIM Solution.



You have read about DCIM but are just not sure if this is the right time to deploy.

The truth is that with information pouring in from all different sources, it is almost impossible to parse through all the noise and figure out if DCIM software is right for your Data Center to consider starting a Data Center Infrastructure Management (DCIM) project.

Is this the right time? If your data center is rapidly changing and you need better insight into your Data Center activity, it might be. We address these questions and others in this e-Book.

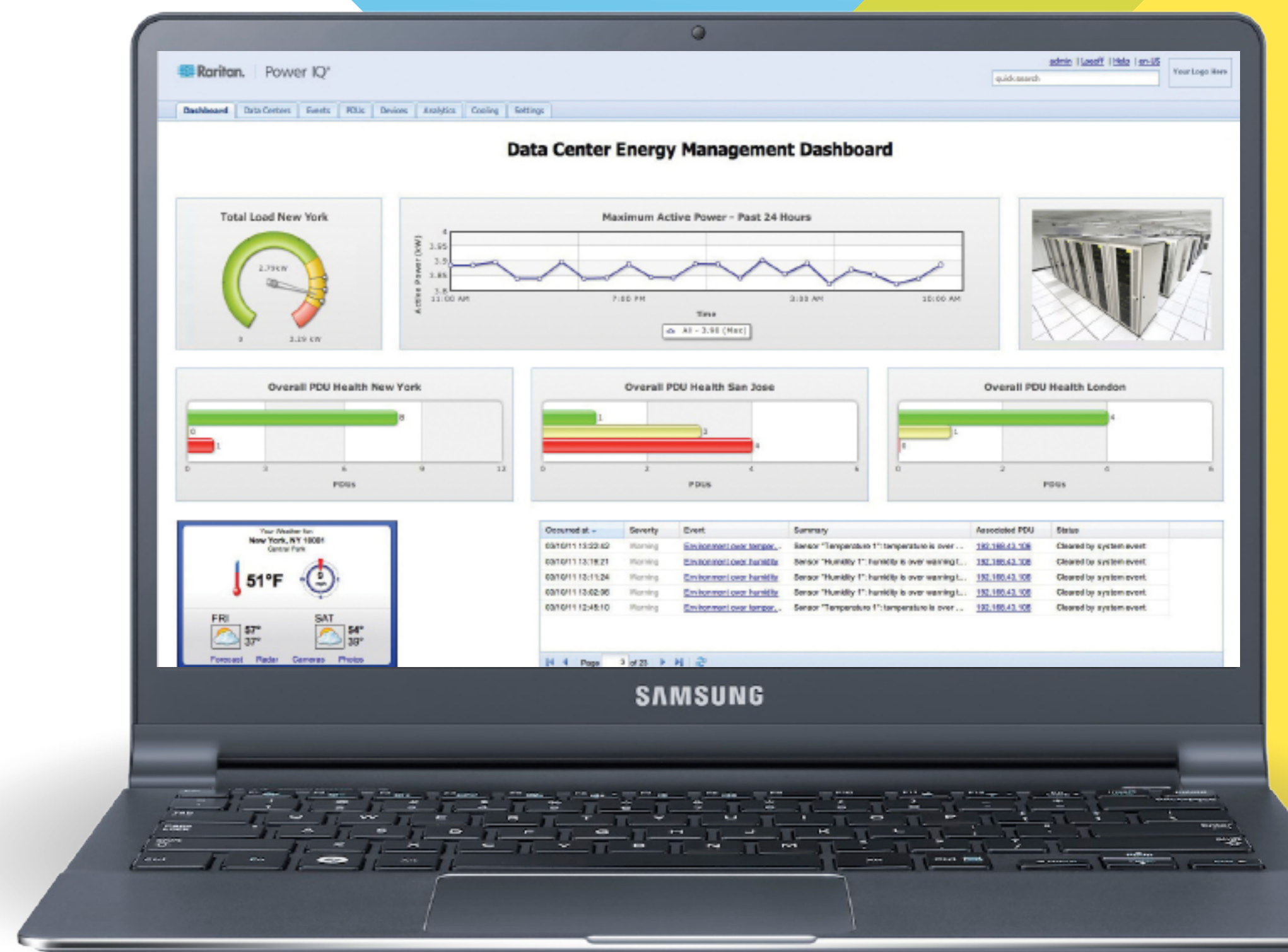


Table of Contents

- 1 Planning a Data Center move?
- 2 Thinking about building a new Data Center?
- 3 Difficulty figuring out where to put new servers, storage, and network equipment?
- 4 Difficulty understanding the status of work in the Data Center?
- 5 Paying for Data Center space and power in a colocation or hosted facility?
- 6 Rely on vendors to remotely perform maintenance activities (moves, adds, changes)?
- 7 Dispatch remote staff to repair systems troubles?
- 8 Need to increase energy efficiency and uptime of your Data Center?

1 Planning a data center move?

You need DCIM to help identify and place your assets in your new Data Center.

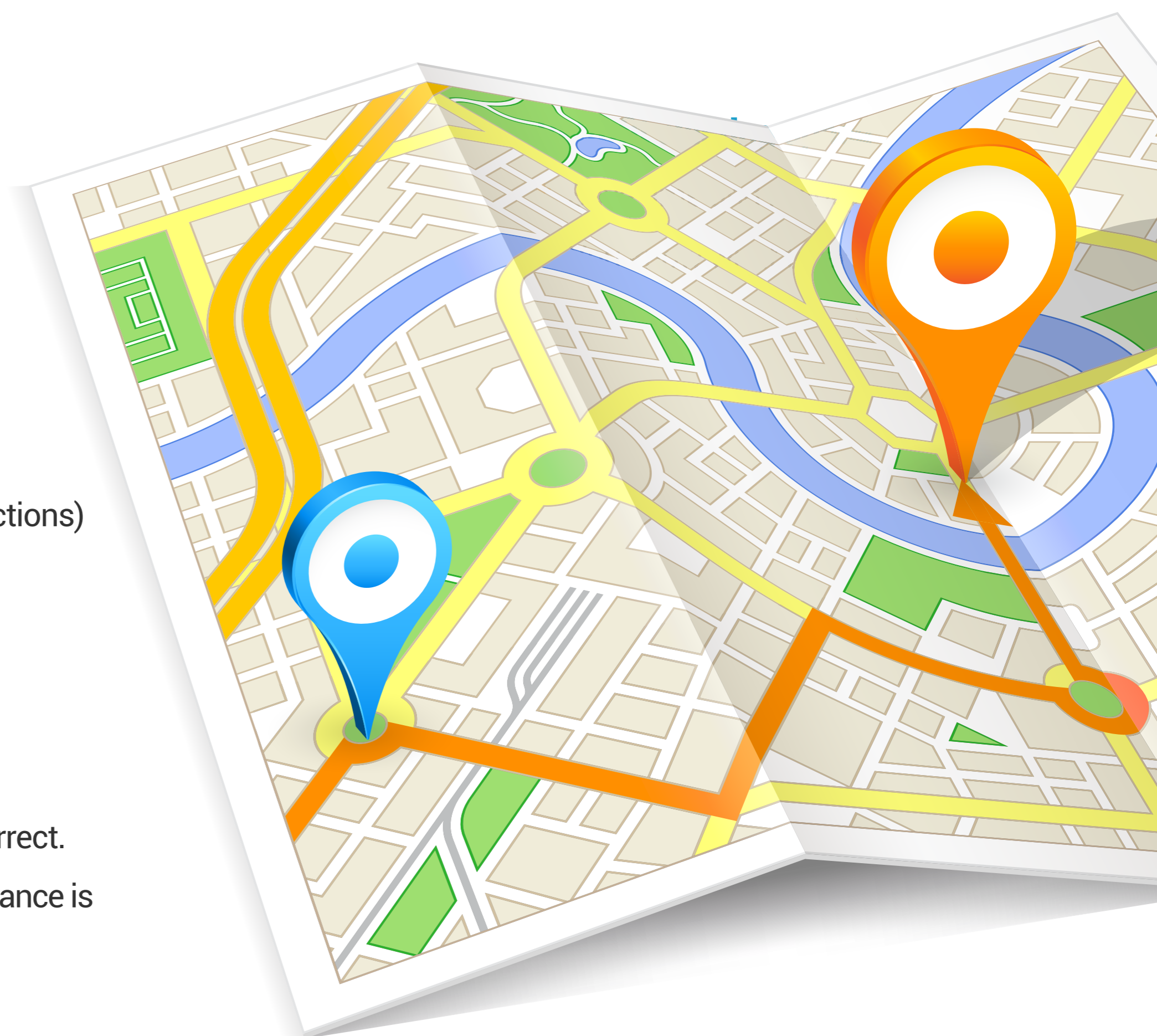
Before DCIM

Manual, audit process to reconcile spreadsheets of assets, locations, and physical power and data connectivity. Limited ability to gather critical information to make quick decisions and changes.

With DCIM

You can easily and more effectively manage your data center

- ◆ Know exactly how much capacity you have (space, power and data connections) in your new space
- ◆ Model and pre-plan your new space before you move in.
- ◆ Pre-populate the DCIM system with known electrical and cable plant infrastructure to automate upstream connections from equipment racks
- ◆ Simplify the planning process through reservations and commissioning
- ◆ Know who carries out the change/work order, when it is done and if it is correct.
- ◆ Know where your assets are located, who owns them, and what the maintenance is



2 Thinking about building a new data center?

You need DCIM to improve your current Data Center capacity management.

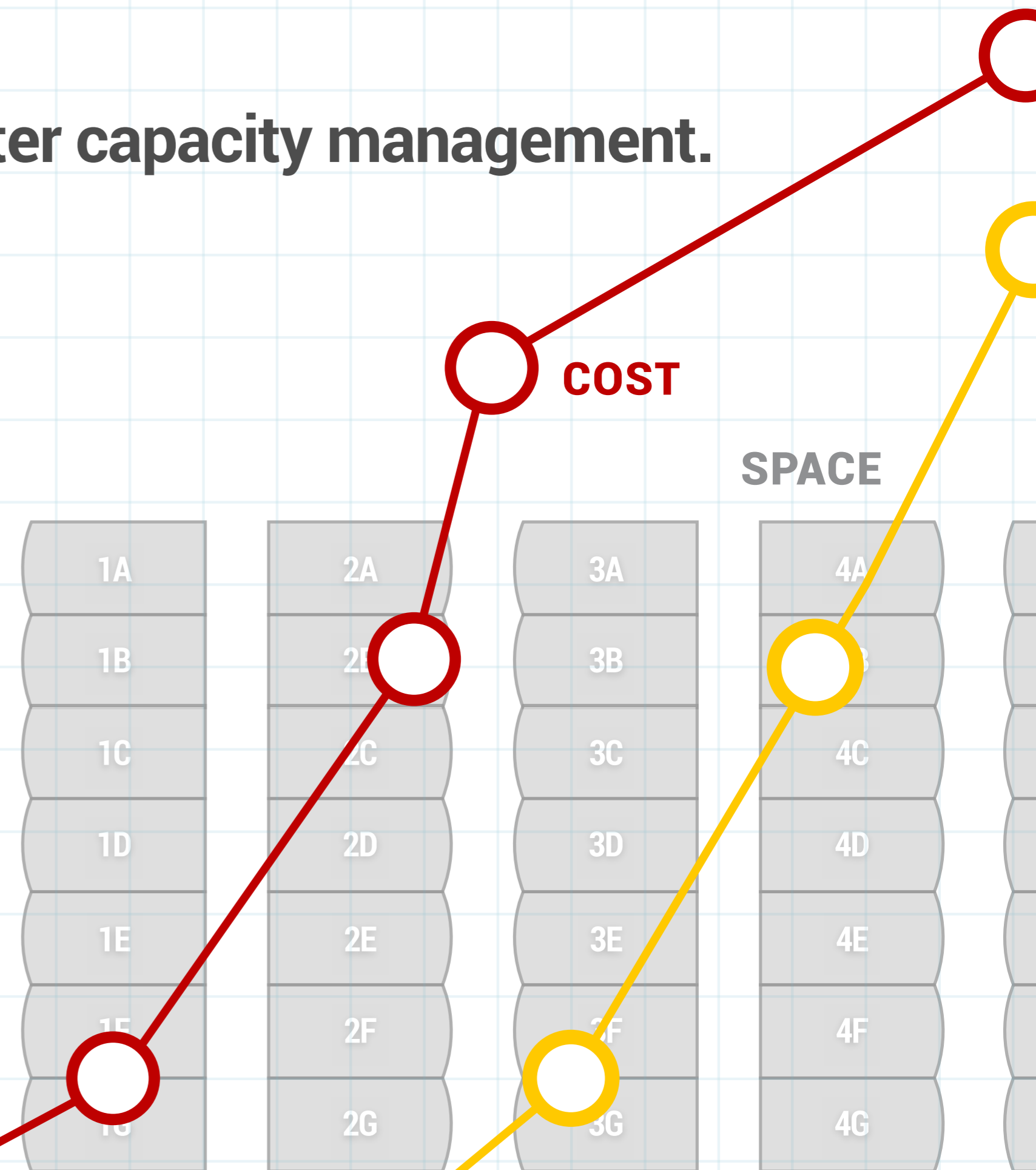
Before DCIM

Capacity and space information are stored in multiple files and across many systems. Integration, correlation, and understanding all of the data and their relationship is nearly impossible, often leading to wasted time, possible errors, overprovisioning and excess capacity.

With DCIM

Easily find stranded capacity, delay spending millions on a new Data Center. DCIM tools can:

- ◆ Provide, reliable, up to the minute information on power consumption and power capacity of your entire power chain for informed decision making
- ◆ Simplify provisioning of assets with automated capacity search that identifies locations based on a set of space, power, and network search parameters
- ◆ Simplify capacity management and planning with point and click reservations
- ◆ Provide graphs on consumption trends enabling capacity forecasting and budgeting of power, space, and network connections.



3 Difficulty figuring out where to put new servers, storage, and network equipment?

You need DCIM to simplify your ongoing Data Center planning and equipment provisioning.

Before DCIM

Inflexible or manual change management processes mean visits to the Data Center, delays in processing work orders and the inability to ensure processes and best practices are followed.

With DCIM

Reduce Data Center churn and install new equipment quickly. Automated processes

- ◆ Simplify and dramatically reduce time to search for rack space, available power and network ports
- ◆ Enable the quick creation of upstream power connections
- ◆ Enable the quick creation of upstream network and data connections
- ◆ Ensure all power and network connections are viable through built-in algorithms that check capacity at all points upstream
- ◆ Ensure accurate available capacity with a single database that maps all relationships
- ◆ Enable reports and status updates on new adds, moves, or changes



Difficulty understanding the status of work in the Data Center?

You need DCIM to speed your workflow process and transparency.

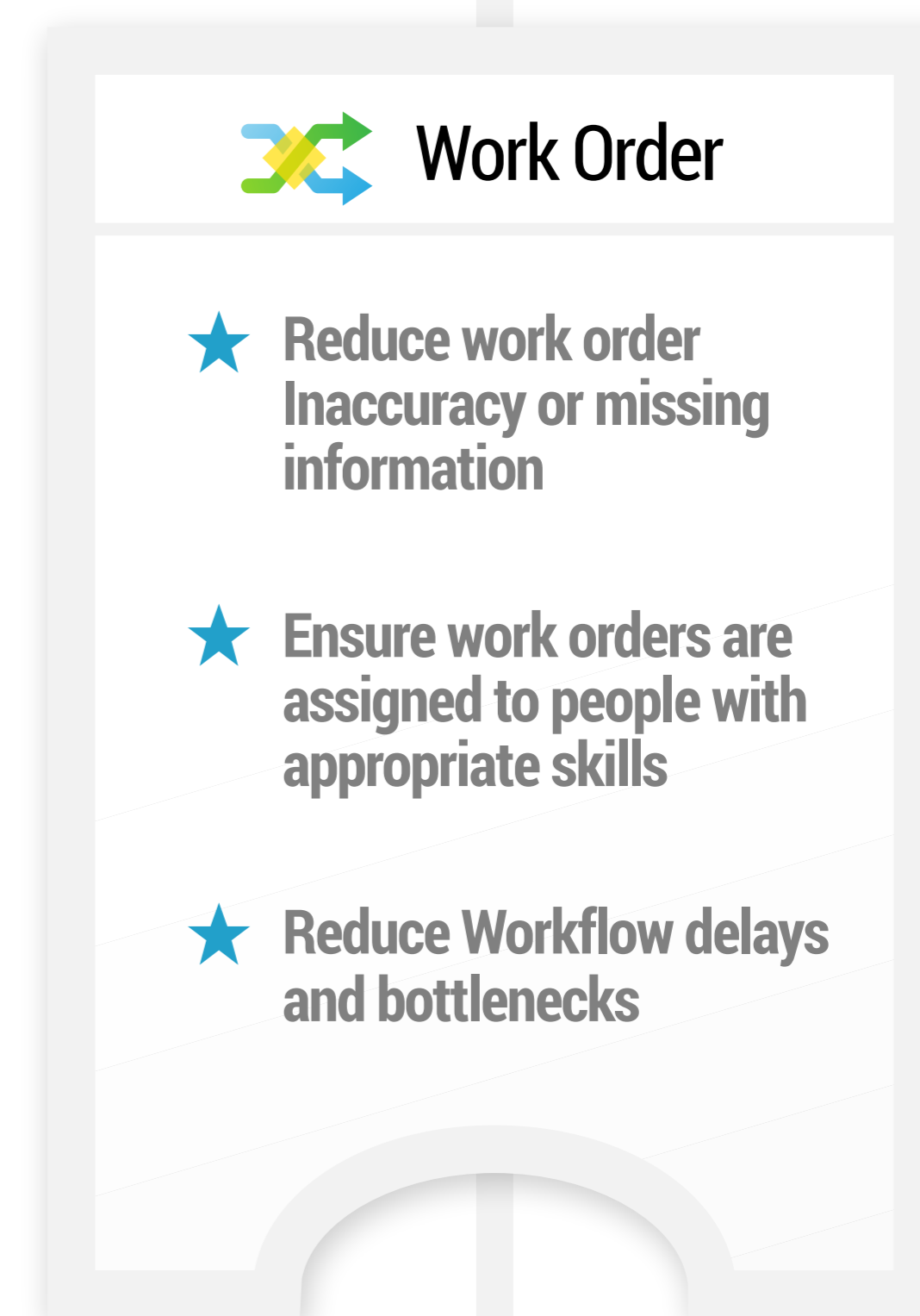
Before DCIM

While Excel files can store information, they are not very good at managing processes and status. Tying the information in the excel files with all your other systems and processes is tedious. Records are often inaccurate, incomplete, not updated, and visits to the data center are often needed.

With DCIM

Combine multiple files into one searchable database, supported by a workflow process to make the provisioning process easier, faster, and more accurate. **DCIM tools provide:**

- ◆ Automated ticketing to speed up requests, approvals, and completion of work
- ◆ Automated logging and tracking of Data Center changes
- ◆ Complete monitoring, management, and reporting on all Data Center work orders
- ◆ Integration with other systems for asset management, ticketing, and other flow through operations



5

Paying for data center space and power in a colocation or hosted facility?

You need DCIM to align power usage with power charges.

Before DCIM

As companies continue to scrutinize their Data Center spend in an effort to reduce costs, moving to colocation facilities is often an option. However, these customers do not want to be charged flat rates. But without DCIM, there is no way to measure how much power each individual customer is using.

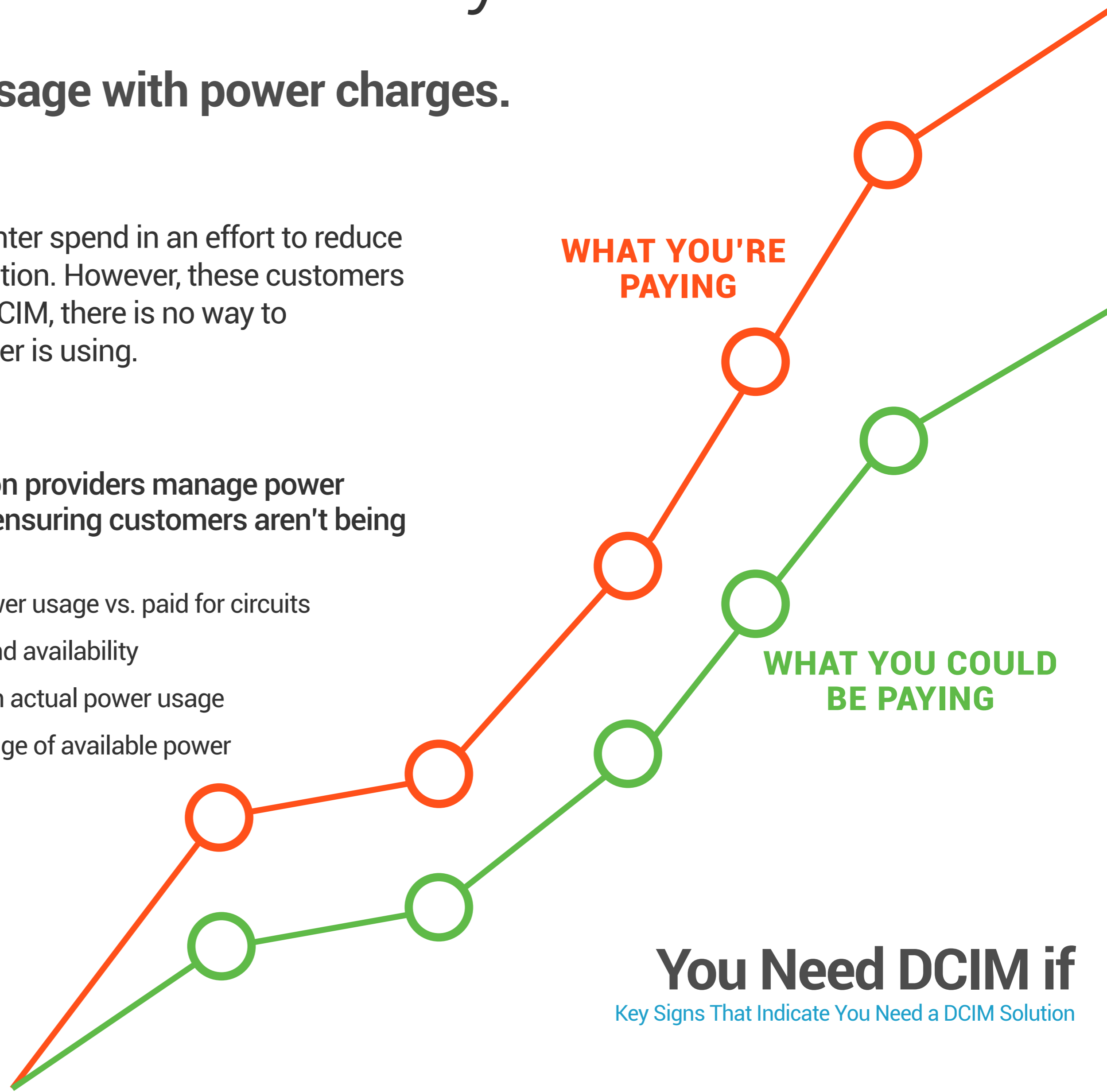
With DCIM

DCIM tools can help both customers and colocation providers manage power usage, cost, and service level requirements, while ensuring customers aren't being over charged. **DCIM enables:**

- ◆ Reports that calculate an individual customers actual power usage vs. paid for circuits
- ◆ Real-time monitoring tools and alerts to ensure uptime and availability
- ◆ Cost allocation reports and bill-back capabilities based on actual power usage
- ◆ Ability to drive energy efficient behavior and improved usage of available power

WHAT YOU'RE PAYING

WHAT YOU COULD BE PAYING





Responsible for a remote Data Center and rely on vendors to remotely perform maintenance activities (moves, adds, and changes)?

You need DCIM to ensure that the actions taken meet the requests submitted.

Before DCIM

Manual processes and email provide a limited ability to communicate, approve, review, and validate changes. Costly mistakes can compromise services and uptime.

With DCIM

You get an accurate digital representation of your remote Data Center and built-in workflow processes that:

- ◆ Enable consistent creation and communication of each work order
- ◆ Enable fast, streamline processing through workflow and automated handoffs
- ◆ Provide tracking and logging mechanisms to monitor the status of each step of all work orders
- ◆ Prevent unauthorized changes from being made
- ◆ Keep Data Center asset information up to date



7

Dispatch remote staff to repair systems troubles?

You need DCIM to quickly and precisely identify where issues are and how to resolve – speeding your to speed time of recovery.

Before DCIM

Costly trips to the Data Center were the only way to see the assets, identify connections, and get more detail regarding trouble conditions.

With DCIM

A DCIM system will provide accurate, real-time representation of your data center.

A DCIM will provide

- ◆ Capability to easily “see” the Data Center floor plan and rack elevations, the assets, and the and their physical connections without setting foot in the Data Center
- ◆ Point and click drill down of the power chain and network/data cable plant to quickly see all relationships
- ◆ Dependency mapping to provide knowledge as to what might resources might be affected if a circuit or other asset goes down
- ◆ Alerts on preset thresholds
- ◆ Reports and trended data for analysis of events leading to trouble conditions
- ◆ Ability to remotely power control servers to quickly restore service



8

Need to Increase energy efficiency and uptime of your Data Center?

Avoid overcooling and save money. DCIM tools allow you to safely increase temperature set points to save up to 30% of your cooling costs.

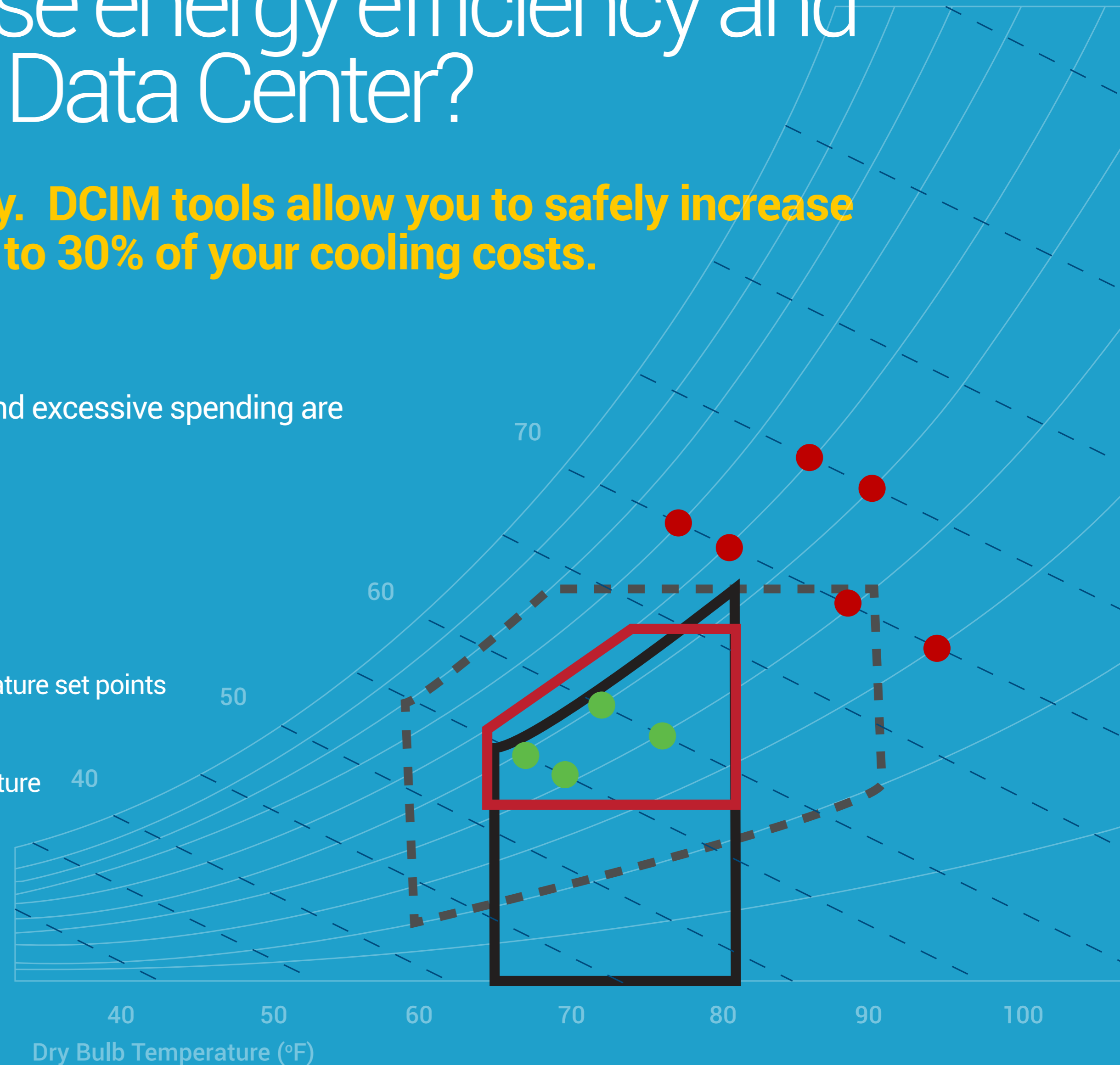
Before DCIM

Overcooling, unknown hot spots, wasted capacity and excessive spending are needed to ensure servers remain up and running.

With DCIM

You can use DCIM tools to easily visualize data and:

- ◆ See hot spots at a glance
- ◆ Know how much you can safely increase/decrease temperature set points
- ◆ Know how much to humidify
- ◆ Determine how much you might save by changing temperature set points



Take the next step with Raritan.



ROI Calculator

Use our ROI Calculator to see how you can save

[Try it now](#)



Schedule a Demo

Schedule a demo and see DCIM in action

[Schedule Demo](#)



30 Day Free Trial

Take a 30 day trial with your data now to learn how DCIM can help you efficiently manage your Data Center

[Take the Trial](#)