

Whitepaper



Brytlyt - Revolutionary Serverless Analytics



Richard Heyns
Founder and CEO

Brytlyt makes speed of thought analytics accessible to all. Just bring your browser and we'll deliver an exceptional analytics experience.

Brytlyt is the world's first serverless analytics platform with GPU acceleration. This innovative SaaS platform is transformational for the analytics industry.

Our ground-breaking GPU-accelerated analytics capabilities are available at your fingertips. You don't need clunky hardware to experience breakneck speeds, or deep pockets to match your disruptive data rivals. You're just a few clicks away from uncovering our end-to-end analytics and visualisation workbench.

Designed for you, our flexible pay-as-you-go model opens up brilliantly advanced analytics to everyone from students to enterprise.

Never before has such exceptional computing power been so readily available. This is a revolutionary step for data analytics which makes solving your toughest analytics challenges remarkably easy.

Sign up and start exploring with the power of GPU – without any of the hardware costs, or hassle of traditional solutions.

Contents

What is serverless?.....	3
Use cases	3
Serverless is the catalyst for transformative data analytics	4
Discover the benefits of Brytlyt	4
Brytlyt Products.....	5
Flexible subscriptions - the choice is yours	6

What is serverless?

Because Brytlyt is serverless, users only need a browser to access our full suite of accelerated analytics technology running on cloud-based GPU hardware - whenever they want, for however long they want.

Just like when using a taxi:

With Brytlyt, customers only pay for what they use. They have complete control to scale capacity up and down as needed, with direct access to our patented software, powered by cutting-edge GPU hardware in the cloud. Just like getting a taxi, you're only charged for the resources you actually use.

Unlike inflexible and costly on-prem or cloud services, Brytlyt users are empowered to do more with our accelerated analytics platform, unrestricted by hidden costs, and unshackled from complex hardware or software management.



Use Cases

Brytlyt provides advanced analytics to every kind of user, from professional and aspiring data scientists to analysts and even students. From start-ups to SMEs and large enterprises, all organisations can access GPU-accelerated analytics within a flexible and scalable solution. Unlock high-performance computing capabilities to more users than ever before:

- Exploratory analysis
- Predictive analytics
- ML and AI model training
- In-database inferencing
- Ad hoc querying
- Processing large datasets at speed

Serverless is the catalyst for transformative data analytics.

Brytlyt is an end-to-end analytics platform with exceptional user experience. This unique platform brings the power of advanced data analytics to everyone without the need for expensive, unscalable technology or specialist skills. Users can now leverage speed-of-thought performance on large evolving datasets without compromise.

This platform is designed from the ground up with the user in mind. Say goodbye to fixed pricing and capacity, inflexible infrastructure and inefficient resourcing. Take your data processes to the next level with on-demand, next-generation, accelerated analytics.

Discover the benefits of Brytlyt



On-demand computing

Users can explore their data and run workloads whenever they want. Whatever the project, GPU resources are automatically allocated based on a project's capacity requirements. Users can easily configure their software according to their needs, with drag-and-drop functionality enabling quick and easy connection to data sources.



Fully managed

Users won't incur any costs for hardware, maintenance, or technical expertise. Everything is managed remotely by the Brytlyt team, making the experience extremely seamless. Our patented, fully automated software is entirely self-healing, with no need for external maintenance, so you don't have to manage a thing. All you need to do is explore.



Scalable and flexible

Additional resources are seamlessly added for high-capacity, resource-intensive workloads as and when they arise or simply when user numbers grow. It's just as easy to scale back resource when needs and requirements change.

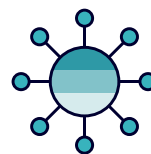


Transparent costs

Hardware fees, maintenance costs, and outsourced experts are a thing of the past. Brytlyt promises no hidden costs. Our credit system means you only pay for the capacity your team uses. A free subscription is also available.

Brytlyt Products

The Brytlyt platform consists of a powerful GPU-accelerated database, analytics, and visualisation workbench with in-database AI capabilities. Used as a SaaS platform, users can quickly log in and unlock powerful performance.



brytlytDB

The fastest and most advanced GPU database in the world.

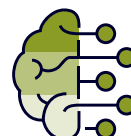
BrytlytDB is the world's fastest GPU database. Our patented intellectual property enables parallel processing on GPU for JOINS – a unique capability which unlocks millisecond query time on billions of rows of data, without pre-aggregation. Built on PostgreSQL, BrytlytDB is highly compatible with existing systems.



spotlyt

Complete GPU powered analytics workbench.

SpotLyt is an interactive and responsive visualisation workbench. With both front-end and back-end scripting, SpotLyt can be fully customised to your needs. Harness advanced visualisations with simplicity, including advanced geospatial analytics and mapping, and extract insights from complex data with ease.



brytmind

Integrated AI modelling and machine learning analytics tool.

BrytMind uses fully embedded in-database integration with PyTorch to eliminate disparate processes and make intelligent analytics more accessible. Users can seamlessly map AI models directly to data in database tables using PyTorch and Jupyter notebooks, enabling ML and deep learning.

Flexible subscriptions. The choice is yours

Brytlyt is designed to be flexible and scalable – meeting your changing needs for cost, capacity, and access.

With no need for hardware on site, there is no extensive deployment or set up process. Once signed up, you can immediately benefit from the full range of the platform's features. Our interface is highly intuitive so anyone can be up and running on the platform in no time,

with fully automated management freeing you up to focus on what matters.

Data upload is seamless and super-fast for an even more unparalleled user experience. Built on PostgreSQL, Brytlyt boasts deep compatibility with external systems and platforms, for easy integration with your existing infrastructure.



Licensing: per 4GB hour of GPU compute (one credit)

Free - No hidden costs or surprises. An efficient starter option with the essential features and data needs, completely free.

Developer - Data analysis is an end-to-end tool for developers. Brytlyt offers a subscription model that enables developers to utilise our platform to suit individual workloads.

Production - For customers whose workloads are highly dependent on data analytics. There's no limit to our features, swift start-up time and support when you need it.

Custom - Some customers have exceptional requirements – if that's you we'll work with you to create the best bespoke solution for your needs.

[CONTACT US](#)