

# Resilience and reliability in the cloud: a case for investment

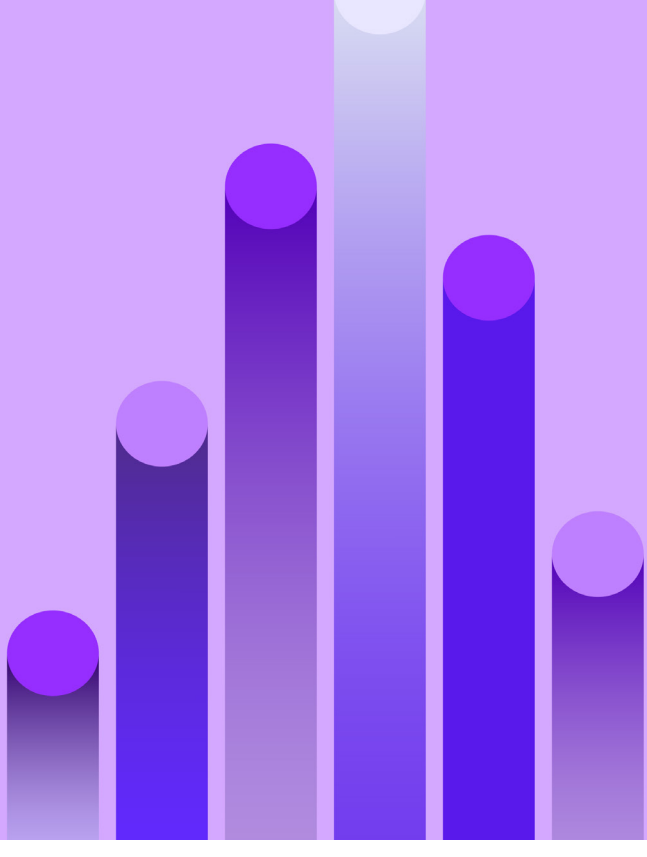
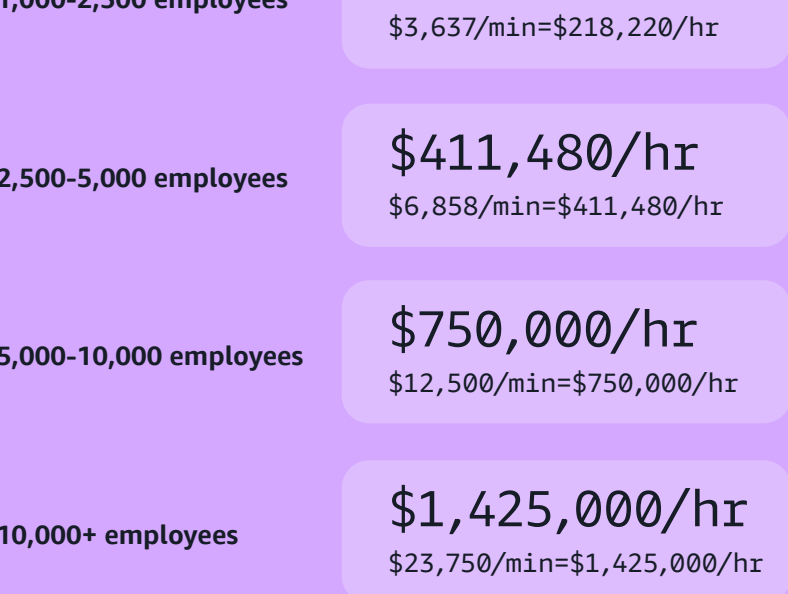
Every company needs to invest in the reliability of their systems with proactive resilience testing to create failure conditions and stop outages before they happen.

## How much will an outage cost you?

### The cost of downtime by company size<sup>1</sup>

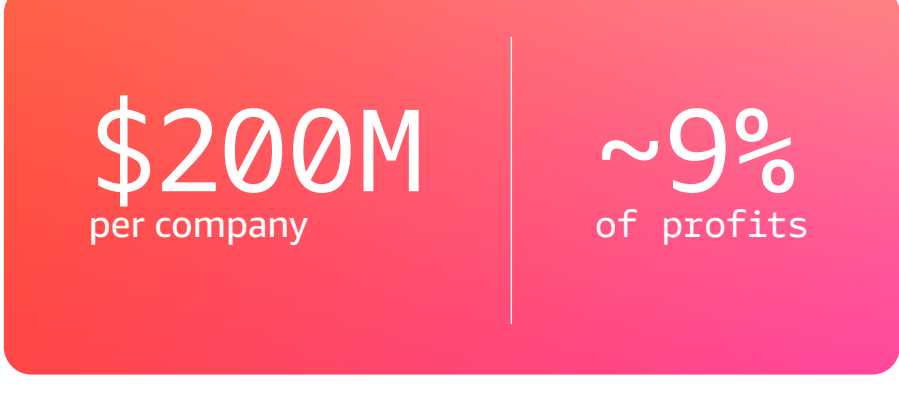
On average, it costs **\$14,056 per minute**, or **\$843,360 per hour** for unplanned downtime.

Cost/minute by company size:

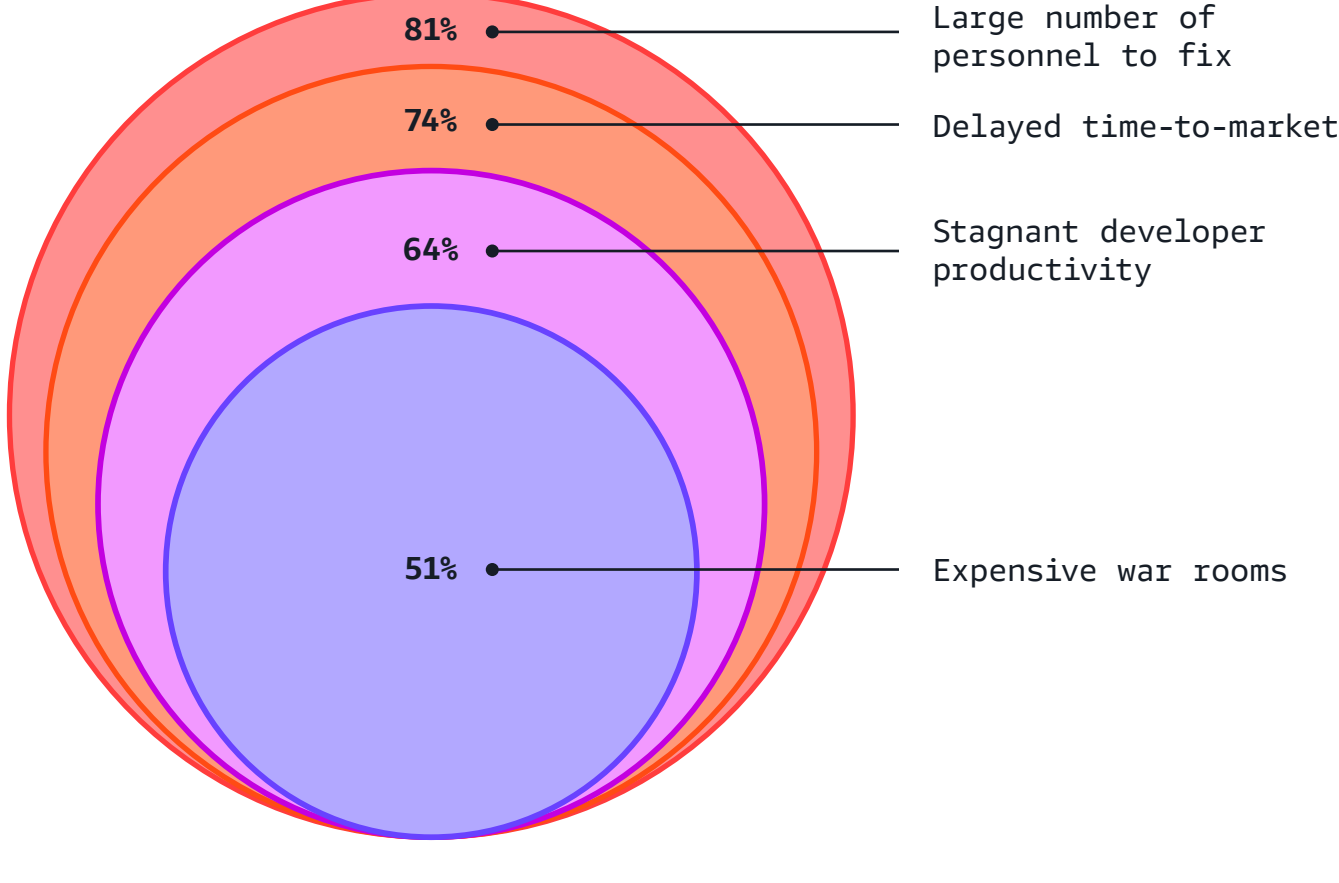


### The direct and hidden costs of downtime<sup>2</sup>

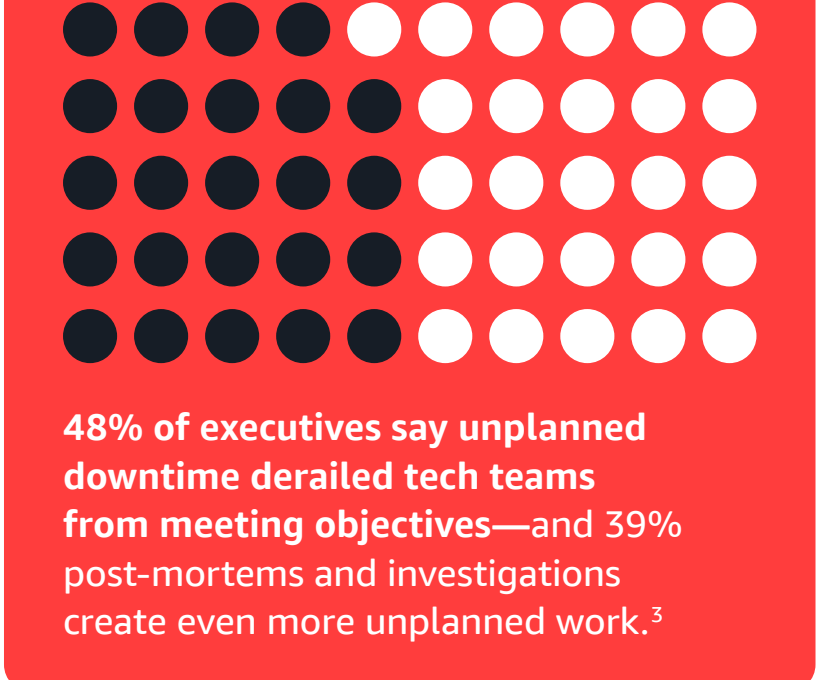
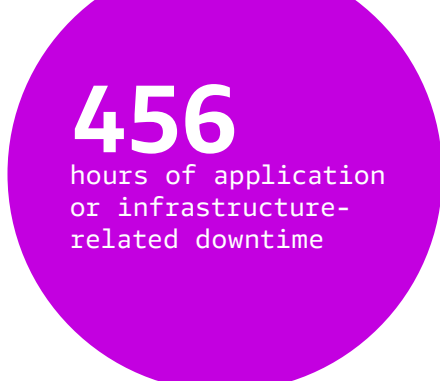
A survey of 2,000 executives from the Global 2000 in partnership with Oxford Economics calculated the average cost of downtime at:



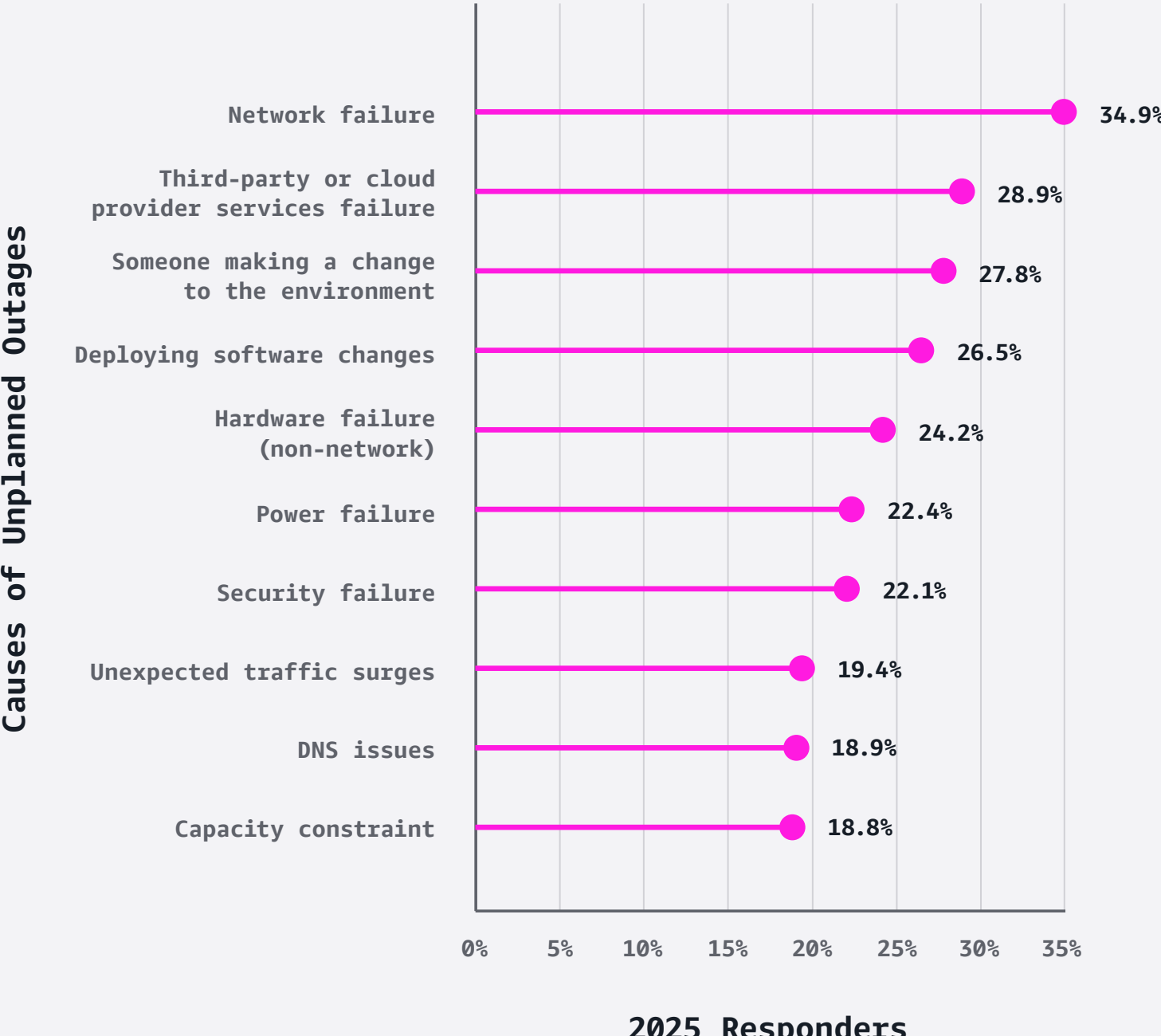
% of executives who cited additional costs:



A typical Global 2000 company sees yearly downtime of:



### Top 10 causes of unplanned outages<sup>4</sup>



### Resilience leaders minimize the financial setbacks of downtime<sup>2</sup>



245 fewer hours of application or infrastructure downtime =  
**54%**  
less than non-leaders

### Companies performing resilience testing experience:

**50%**  
decrease in downtime

**0**  
major incidents during cloud migrations

## About Gremlin

Gremlin is the Enterprise Reliability Platform that helps teams proactively test their systems, build and enforce reliability and resiliency standards, and automate their reliability practices organization wide.



By combining AWS and Gremlin, customers have drastically increased the resiliency, reliability, and availability of their systems.

<sup>1</sup> IT outages: 2024 costs and containment (EMA and Big Panda)  
<sup>2</sup> The Hidden Costs of Downtime (Splunk)  
<sup>3</sup> State of Resilience 2025 (Cockroach)  
<sup>4</sup> New Relic Observability Forecast 2024  
<sup>5</sup> Gremlin customer results, 2024

