

Preparing and Responding to Disaster

Affordable Tracking, Messaging and Mapping By Satellite for Disaster Management

Natural disasters are on the rise, and so is their severity. In the 1980s, there was an average of 3 disasters per year that caused over a billion dollars' worth of damage. In the 2010s, there were 13 per year on average. In addition to property damage, injury and loss of life, natural disasters also play havoc with communication. Wired networks fail and cell towers fall – just when they are needed most for –



Coordinating Responders in the Field

Disaster teams need to report their locations and exchange information with crisis managers. That combination creates vital situational awareness and enables responders to coordinate their efforts for best effect.



Managing Assets

Effective disaster response takes massive amounts of equipment, from vehicles and construction gear to generators and emergency housing. Having exact location data on that equipment lets crisis managers avoid bottlenecks, assess supply against demand and direct vital equipment where it can do the most good. It also protects against theft and loss in the chaotic conditions that follow disaster.



Minimizing Casualties

Speed of response is one of the prime determiners of success in managing and minimizing the impacts of disaster. Communication and location data are critical to locating the injured and coordinating medical assistance and transport when needed.



Keeping Responders Safe

The people who go into harm's way to respond to disaster are frequently at risk themselves. The ability to send a call for help not only keeps responders safe but lets them feel safer while they work.

Affordable Visibility and Connection Everywhere

When ground-based communication fails, crisis managers have long relied on satellite to fill the gap, even when it was costly and complicated to use. But those days are gone. Crisis managers today rely on the Globalstar Satellite Network to provide the most reliable and affordable communication and situational awareness across a disaster zone.



Keeping Crews Connected

Globalstar GPS Messengers are reliable, long-life handheld devices that connect via satellite, sending GPS data to provide updates on location as often as every few minutes. The devices also give responders an affordable, easy-to-use texting system for checking in and reporting on progress.



Tracking Assets

Globalstar GPS Trackers mounted on vital equipment send location data to an advanced digital mapping application that provides full visibility of location and movement. It enables equipment to be sourced from the nearest supply and redirected on the fly. Geofencing enables managers to set boundaries that generate alerts if equipment moves outside them, making it easier to detect and respond to theft or misuse.



Coordinating Care

Globalstar GPS Messengers provide the combination of location and communication that speeds identification of people needing medical help and enables faster and more efficient coordination to provide it and transport people to healthcare facilities.



Safeguarding Responders

Globalstar GPS Messengers let responders report on status and share their location – and the unique ability to push a button that sends an SOS signal to crisis managers.



Smarter Data From Globalstar

Globalstar's satellite tracking and messaging technology is simple, reliable and affordable. Devices have small, internal antennas like mobile phones. Instead of gulping power, their low-energy design sips it slowly, and solar models generate their own. They connect to a satellite network orbiting at 1,400 kilometers above the Earth, which provides coverage in over 120 countries with no roaming charges. They transmit small bursts of data at intervals you choose for a low monthly fee: more than 1.3 billion of messages every year. We call it Smart Data: just the GPS and text data you need, provided reliably and securely at an affordable cost over most of the world.

Preparation vs. Response

Globalstar offers flexible plans that enable disaster response organizations to purchase and stockpile GPS Messengers and Trackers at strategic locations. They can activate service on the devices as they are required and de-activate it when the need has passed. The devices are built for rugged service and simple operation, so that first responders can be up and running with minimal training.

Delivering Value Across Your Operations

The globalstar network and technologies deliver value across your operations.

Asset Tracking Solutions

- ✓ Protection against loss based on location data and geofencing
- ✓ Fast identification of unexpected activity signaling potential problems
- ✓ Improved coordination of operations
- ✓ Better business performance from more efficient use of assets
- ✓ Digital mapping that turns GPS location and data from the field into actionable visual intelligence with advanced reporting capabilities

Remote & Lone Worker Safety Solutions

- ✓ Check-in for remote crews and lone workers, with pre-set messages and GPS coordinates
- ✓ SOS button to signal emergencies
- ✓ Digital mapping that simplifies location tracking to keep remote and lone workers safe and productive

Asset Tracking Solutions

Low Power, Long Life and Equipped to Perform



Integrity 150 is a next-generation, solar-powered asset tracker that interfaces easily with industry-standard sensors over Bluetooth. It delivers zero-maintenance ownership with the longest-lasting battery (10+ years) and shelf life available. With its low-power design built for the world's most challenging environments, the Integrity 150 reliably delivers secure location reporting and sensor data transmission to monitor critical functions.



SmartOne Solar is the only solar asset tracker certified as Intrinsically Safe with ATEX Zone 0 and HERO (Hazard of Electromagnetic Radiation to Ordinance) certifications for hazardous environments. Virtually maintenance-free with up to 10 years of usable service for tracking and monitoring, it's easy to install – requiring no harnesses, external power, or external antennas. In addition, the SmartOne Solar features a wide range of reporting capabilities with inputs available to monitor critical functions.



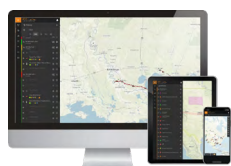
GSatSolar is a rugged, low-cost, ultra small, solar-powered device ideal for off-grid tracking of assets and remote IoT operations. The terminal is compact, easy to use and install, and is built for tough outdoor use.



SmartOne C is the market's most affordable and feature-rich tracker for locating fixed and mobile assets and transmitting sensor data. Line or battery-powered, it is a small, easy-to-mount unit that is ideal for sending GPS coordinates at long intervals and configurable for various frequency rates.



SPOT Trace is a small, discrete tracker that tracks mobile assets by providing location pings as often as every 2.5 minutes for display on a customizable user dashboard. This easy-to-use turnkey device offers simplified tracking at the lowest cost.



Digital Mapping that turns GPS location and data from the field into actionable visual intelligence. It provides high visibility of all in-field resources, geofencing that can trigger alerts to atypical changes, and advanced reporting capabilities.

Remote and Lone Worker Safety

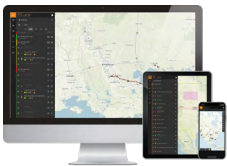
Technology for Tracking, Communication, and Safety Compliance



SPOT X GPS Messengers connect to your smart phone via Bluetooth wireless technology through the SPOT X app to access your contacts and communicate easily with colleagues.



SPOT Gen4 GPS Messengers provide an inexpensive, reliable way to report locations, use pre-set messaging for check-in and have access to an SOS button to signal the need for emergency assistance.



Digital Mapping that simplifies location tracking to keep remote and lone workers safe and productive.

Satellite Modems & Modules

Low Cost Developer Solutions



ST150M can be quickly and effectively integrated into technology to develop unlimited applications. The modem leverages industry-leading BLE5, Nordic C, and comprehensive unified APIs, empowering rapid development and customization of firmware for more advanced smart data applications and enabling AI at the edge. Additionally, the ST150M provides both wired and BLE access to the fully programmable 24 I/Os for interface with sensors and actuators.



ST100 gives developers a low-cost option for adding instant satellite communications capabilities to any OEM product for any market. Ultra-light in weight and compact, the ST100 can be used in a variety of simple tracking applications.



STX3 offers affordable pricing, low power consumption and compact build. The smallest surface-mountable satellite modem from Globalstar, the STX is ideal for delivering remote sensing, tracking and monitoring data.

How to Better Manage Disasters

When disaster strikes, responders don't have time to read a manual. They need easy-to-use technology that just works. Globalstar's technology and second-generation satellite network improve the efficiency, effectiveness and safety of disaster response at a cost that will surprise you and an ease-of-use that teams in the field will really appreciate.



Why Globalstar?

Globalstar empowers its customers to connect, transmit, and communicate in smarter ways – easily, quickly, securely, and affordably – offering reliable satellite and terrestrial connectivity services as an international telecom infrastructure provider. The Company's LEO satellite constellation ensures secure data transmission for connecting and protecting assets, transmitting critical operational data, and saving lives for consumers, businesses, and government agencies across the globe. Globalstar's terrestrial spectrum, Band 53, and its 5G variant, n53, offers carriers, cable companies, and system integrators a versatile, fully licensed channel for private networks with a growing ecosystem to improve customer wireless connectivity, while Globalstar's XCOM RAN product offers significant capacity gains in dense wireless deployments. In addition to SPOT GPS messengers, Globalstar offers next-generation IoT hardware and software products for efficiently tracking and monitoring assets, processing smart data at the edge, and managing analytics with cloud-based telematics solutions to drive safety, productivity, and profitability.

To learn more about how Globalstar can benefit your business, contact us at salesinfo@globalstar.com.